

CURATING THE WORLD'S GREATEST WILDERNESS ESCAPES



TREE TENTS INTERNATIONAL

WILDERNESS  ARCHITECTURE

- Solar Station -





- Solar Station -

off-grid solar made simple

Rolling out off-grid power and solar charging to your site can be a little bewildering - finding the best location for your panels, choosing what rating of battery you need and connecting all that up to the right charge controller and other electrics. With many sites there's then occasions where you need it all somewhere else. Here at Tree Tents we created a neat solution we call the Solar Station. A mobile unit incorporating a deep cycle AGM battery, solar panel, app based monitoring and a range of connection cables and units to make adding power to your structures or tents a breeze!





OFF-GRID SOLAR POWER MADE SIMPLE....

Most of the wilderness structures we build are well off the beaten track and so always need some form of power solution to run lighting, water pumps, 12v fridges and charging points - even the toilet on some occasions! There's lots of different solutions out there with batteries and solar panels usually at the fore. There's usually a reoccurring problem we see and that's when a bit too much power has been used from the battery and not enough sun available to charge - to rectify this owners then have to take the battery somewhere they can charge from the mains to top up the charge. There's then also the problem of where to mount the panels - if your cabin or tree house is in the sheltered woods then owners usually have to build a mounting frame on the outskirts or in a clearing and run the cable to the shelter.

With all these issues to solve, we see owners struggle with knowing what solar panel to buy, what battery is the best and just how to connect it all up so we decided to see if we could design a neat, integrated solution that could be 'rolled out' anywhere.

WHAT CAN IT POWER AND FOR HOW LONG?...

In most of our off-grid cabin or tent set-ups we'll be running some LED lighting along with some USB charging sockets, a 12v fridge and small 240V inverter to plug in things like laptops. Mainly low wattage items so no hair driers or electric heaters ;)

Our 100W panel & 115Ah battery combination will usually give a set-up like this uninterrupted power throughout most of the season (UK winters may need additional charge time).

WHAT IF THERE'S NOT MUCH SUN AND THE BATTERY NEEDS CHARGING?...

The great thing about our solar station is that its very mobile! As such when power demands become too high and the suns not playing ball then it can be easily moved back to the workshop, house or nearest mains electric point, plugged in and charged back up ready for your next guests. Mains charging usually takes about 24 hours to get things back to full charge.

HOW FAR FROM OUR CABIN OR TENT CAN THE STATION BE?...

Long cables mean loss of power so it cant be too far away otherwise the cable size needed gets expensive. We offer a few different lengths of connection cable but the maximum that you can really economically go to is 20m

CAN I GET SPARES FOR IT?...

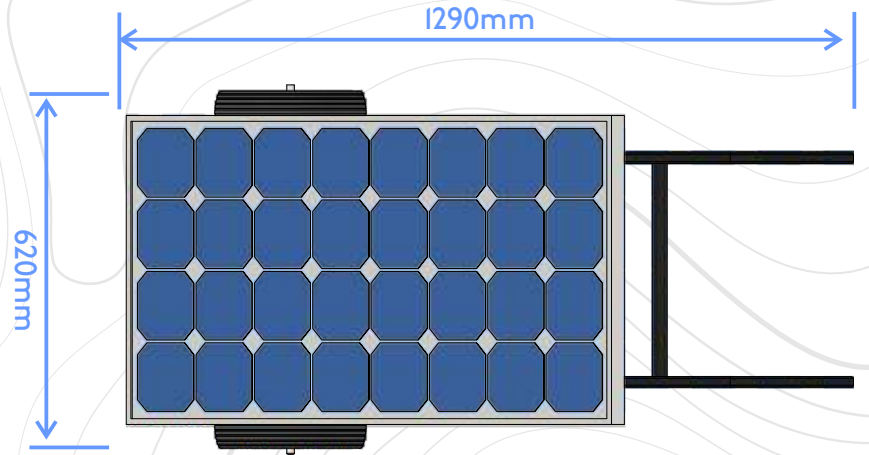
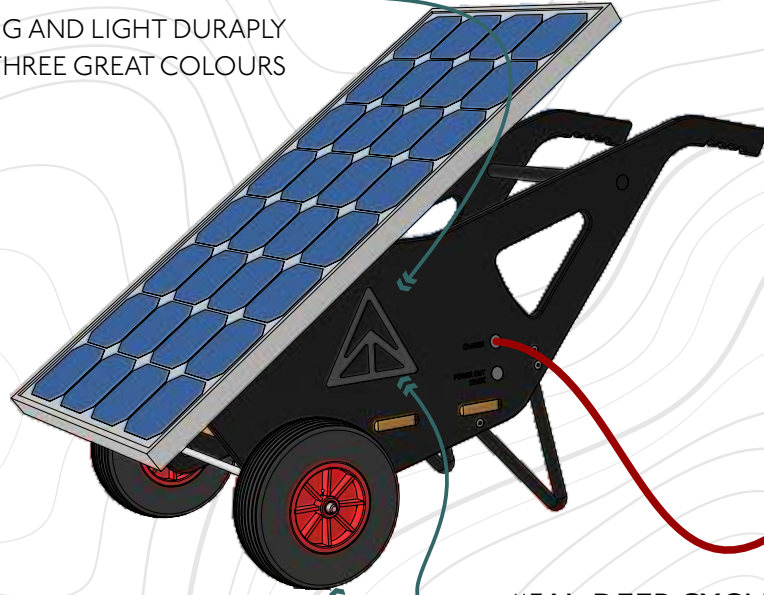
We've selected some of the best materials and parts for our solar station so hope it will give you years of reliable power for your site however batteries, charges controllers, solar panels, wheels and even frame panels can be bought separately if broken or damaged beyond repair.



SPECIFICATION

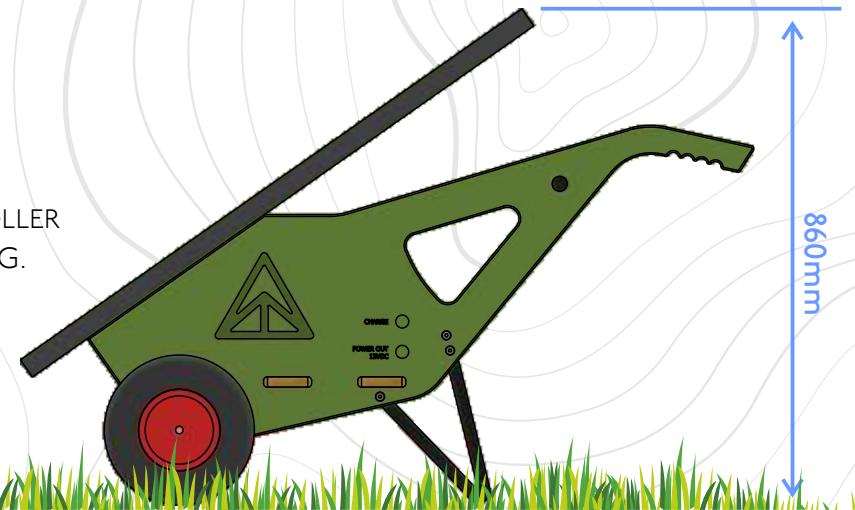
100W SOLAR PANEL :
IP67, EFFICIENT & RUGGED 100W
MONOCRYSTALLINE SOLAR PANEL.

TREE TENTS DURAPLY FRAME :
STRONG AND LIGHT DURAPLY
FRAME IN THREE GREAT COLOURS



115Ah DEEP CYCLE BATTERY :
AGM DEEP CYCLE SOLAR STORAGE BATTERY
WITH INTELLIGENT, MPPT CHARGE CONTROLLER
& BLUETOOTH / APP BASED MONITORING.

PUNCTURE PROOF WHEELS :
RUGGED PUNCTURE PROOF
WHEELS WITH ROLLER BEARING HUBS
& DIAMOND TREAD PATTERN.



CURATING THE WORLD'S GREATEST WILDERNESS ESCAPES

TREE TENTS INTERNATIONAL

WILDERNESS ARCHITECTURE

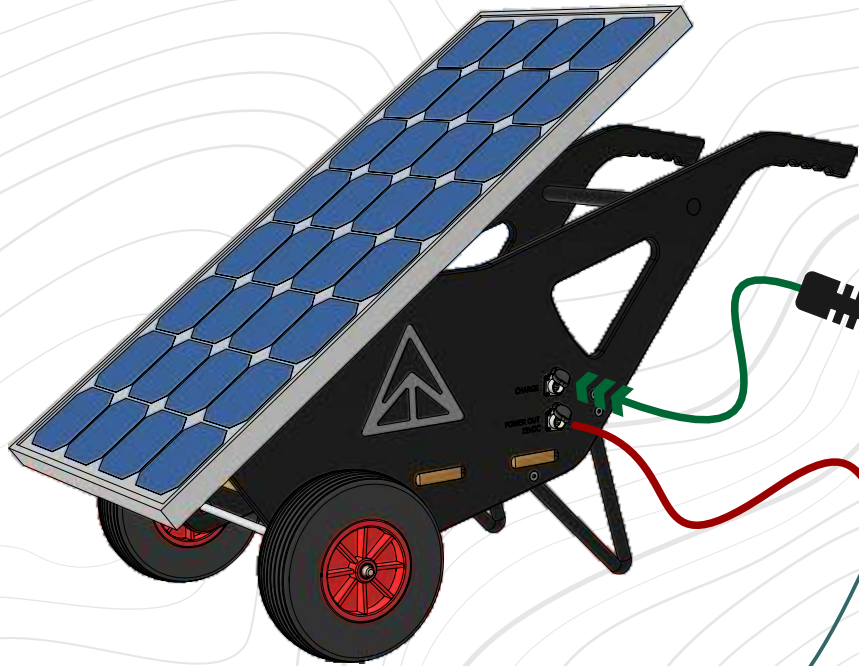
- Accessories -



ACCESSORIES

MAINS CHARGER:

Plug in mains charger for top-up mains charging of the Solar Station when required.



12V & USB POWER PANEL.

Featuring 2 x 12V 'car lighter' style sockets, 2 x 1A USB & 2 x 2.1A USB power sockets this neat power panel connects to your chosen Solar Station power cable to offer easy connection of charging cables & accessories such as our festoon lights & mains inverter.

240VAC 150W INVERTER:

Plug in mains inverter.

FESTOON CONNECTION CABLE:

High quality, 5m festoon connection cable. Connects the festoon light set to our power panels.

12V POWER FEED CABLE:

High quality, plug in power feed cables to run from your solar station to usage point. Available in three lengths as required.
3m / 6m / 12m

12V FESTOON LIGHT SET:

A set of 10 x 12V 'Squirrel Cage' style LED festoon lights on 5.65m of connectable cable with 0.5m spacing. Connect up to 5 sets to create a maximum festoon of 50 lights.

CURATING THE WORLD'S GREATEST WILDERNESS ESCAPES

TREE TENTS INTERNATIONAL

WILDERNESS ARCHITECTURE

PRICING & OPTIONS:

Our handy Solar Stations can be rolled out virtually anywhere to offer easy, renewable power to your off-grid accommodation, facilities or site lighting. Our main unit is perfect for small cabins, treehouses & tents needing to integrate some lighting, charging points and low power mains plug points.

1. SOLAR STATION - 115AH + 100W SOLAR SET:

A perfect set-up for a small off-grid cabin, bell tent or Tree House! Includes one of the best 100W solar panels available along with an ultra durable 115Ah AGM deep cycle leisure battery, intelligent charge controller and bluetooth / app based health and charge monitoring. All neatly packed onto our Tree Tents durably frame and puncture proof wheels. Charged and ready for use!

£1,249.17 (ex.vat)

2. 12V POWER FEED CABLE:

High quality, plug in power feed cables to run from your solar station to Plug Panel. Available in three lengths as required.

3m: £46.00 (ex.vat). | 6m: £52.00 (ex.vat). | 12m: £64.00 (ex.vat).

3. PLUG PANEL:

Plug socket panel with 2 x 1A & 2 x 2.1A USB & 12V, 15A DIN 'lighter style' sockets.

£90.00 (ex.vat).

4. MAINS CHARGER:

Noco Genius mains charger for mains top-up charging of the solar station when needed. Includes Solar Station direct connection lead.

£72.00 (ex.vat).

5. LED FESTOON SET:

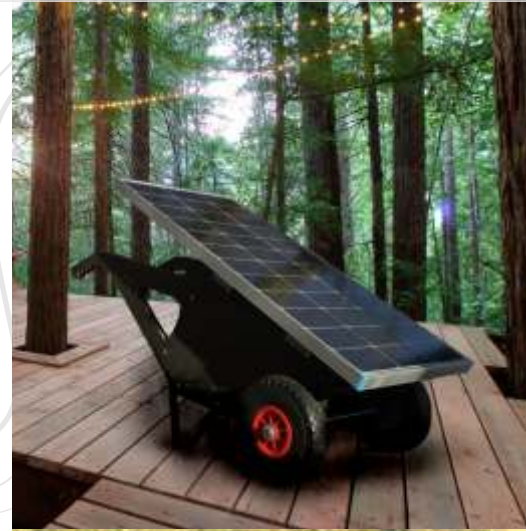
A 10 x LED, vintage style Festoon lighting set to light up your site. Interconnectable for up to 5 sets. Plug Panel connection cable required for your first set.

FESTOON SET: £26.00 (ex.vat). | PLUG PANEL CONNECTION CABLE 5m: £25.00 (ex.vat).

6. MAINS INVERTER:

A 150W mains inverter for plugs directly into our Plug Panel for powering low power mains devices such as laptops, small TV's, shavers etc. Sorry no hair dryers :(


£38.00 (ex.vat).



CURATING THE WORLD'S GREATEST WILDERNESS ESCAPES



TREE TENTS INTERNATIONAL

WILDERNESS  ARCHITECTURE

- UNIQUE ACCOMMODATION STRUCTURES -
- CREATIVELY ENGINEERED SITE PRODUCTS -
- SITE DESIGN & CURATION -
- OFF-GRID INTEGRATION -
- JOINT VENTURES -
- SPECIAL PROJECTS -

TREE TENTS INTERNATIONAL

UNIT B38 BRIDGE FARM
BARCOMBE MILLS ROAD
BARCOMBE, EAST SUSSEX
BN8 5BX

+44(0)1273 782360 - info@treetents.co.uk
www.treetents.co.uk